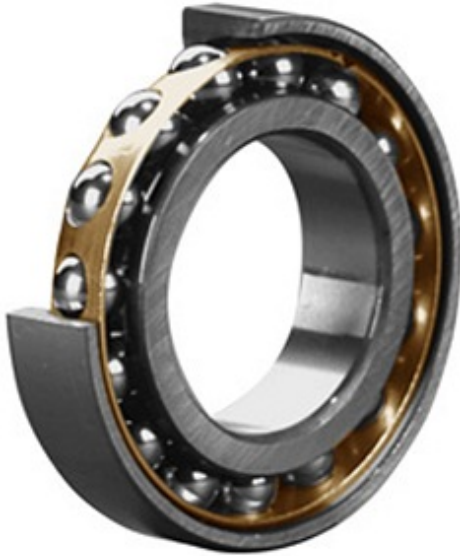


PRECISION BEARING CORP.



75 mm x 160 mm x 37 mm skf 7315 becbm bearing

Bearing No. 7315 becbm

7315 becbm Bearing 2D drawings and 3D CAD models

Category	Angular Contact Ball Bearings
Inventory	7.0
Manufacturer Name	SKF
Minimum Buy Quantity	N/A
Weight	3.39
EAN	7316577150882
Product Group	B00308
Enclosure	Open
Flush Ground	Yes
Rolling Element	Ball Bearing
Number of Rows of Balls	Single Row
Precision Class	ABEC 3 ISO P6
Maximum Capacity / Filling Slot	No
Snap Ring	No
Cage Material	Brass
Contact Angle	40 Degree
Internal Clearance	CB
Number of Bearings	1 (Single)
Mounting Arrangement	Universal
Inch - Metric	Metric
Long Description	75MM Bore; 160MM Outside Diameter; 37MM Width; Open; Yes Flush Ground; Ball Bearing; Single Row of Balls; ABEC 3 ISO P6; No Filling Slot; No Snap



PRECISION BEARING CORP.

	Ring
Other Features	Normal Axial Internal Clearance
Category	Angular Contact Ball Bearing
UNSPSC	31171531
Harmonized Tariff Code	8482.10.50.28
Noun	Bearing
Keyword String	Angular Contact
Manufacturer URL	http://www.skf.com
Manufacturer Item Number	7315 BECBM
Weight / LBS	7.472
D	6.299 Inch 160 Millimeter
B	1.457 Inch 37 Millimeter
d	2.953 Inch 75 Millimeter
bore diameter:	75 mm
radial static load capacity:	104 kN
outside diameter:	160 mm
cage material:	Brass
overall width:	37 mm
outer ring width:	37 mm
contact angle:	40 °
maximum rpm:	5300 RPM
row type & fill slot:	Single-Row Non-Fill Slot
finish/coating:	Uncoated
internal clearance:	C0
precision rating:	ABEC 3 (ISO Class 6)
closure type:	Open
fillet radius:	2 mm
radial dynamic load capacity:	132 kN
series:	73
d	75 mm

PRECISION BEARING CORP.

D	160 mm
B	37 mm
d ₁	108.25 mm
d ₂	91.13 mm
D ₁	128.9 mm
a	68 mm
r _{1,2} min.	2.1 mm
r _{3,4} min.	1.1 mm
d _a min.	87 mm
D _a max.	148 mm
D _b max.	153 mm
r _a max.	2 mm
r _b max.	1 mm
Basic dynamic load rating C	132 kN
Basic static load rating C ₀	104 kN
Fatigue load limit P _u	4.15 kN
Reference speed	5300 r/min
Limiting speed	6700 r/min
Calculation factor A	0.171
Calculation factor k _r	0.1
Calculation factor e	1.14
Calculation factor X	0.35
Calculation factor Y ₀	0.26
Calculation factor Y ₂	0.57
Calculation factor X	0.57
Calculation factor Y ₀	0.52
Calculation factor Y ₁	0.55
Calculation factor Y ₂	0.93
Mass bearing	3.2 kg