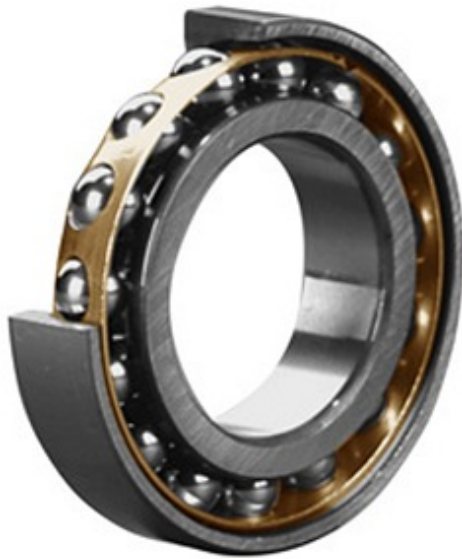


# PRECISION BEARING CORP.



100 mm x 215 mm x 47 mm skf 7320 becbm bearing

Bearing No. 7320 becbm

7320 becbm Bearing 2D drawings and 3D CAD models

Category	Angular Contact Ball Bearings
Inventory	0.0
Manufacturer Name	SKF
Minimum Buy Quantity	N/A
Weight	8.01
EAN	7316577095091
Product Group	B00308
Enclosure	Open
Flush Ground	Yes
Rolling Element	Ball Bearing
Number of Rows of Balls	Single Row
Precision Class	ABEC 3   ISO P6
Maximum Capacity / Filling Slot	No
Snap Ring	No
Cage Material	Brass
Contact Angle	40 Degree
Internal Clearance	CB
Number of Bearings	1 (Single)
Mounting Arrangement	Universal
Inch - Metric	Metric
Long Description	100MM Bore; 215MM Outside Diameter; 47MM Width; Open; Yes Flush Ground; Ball Bearing; Single Row of Balls; ABEC 3   ISO P6; No Filling Slot; No Snap



# PRECISION BEARING CORP.

	Ring
Other Features	Normal Axial Internal Clearance
Category	Angular Contact Ball Bearing
UNSPSC	31171531
Harmonized Tariff Code	8482.10.50.28
Noun	Bearing
Keyword String	Angular Contact
Manufacturer URL	<a href="http://www.skf.com">http://www.skf.com</a>
Manufacturer Item Number	7320 BECBM
Weight / LBS	17.646
D	8.465 Inch   215 Millimeter
d	3.937 Inch   100 Millimeter
B	1.85 Inch   47 Millimeter
bore diameter:	100 mm
radial static load capacity:	208 kN
outside diameter:	215 mm
cage material:	Brass
overall width:	47 mm
outer ring width:	47 mm
contact angle:	40 °
maximum rpm:	4000 RPM
row type & fill slot:	Single-Row Non-Fill Slot
finish/coating:	Uncoated
internal clearance:	C0
precision rating:	ABEC 3 (ISO Class 6)
closure type:	Open
fillet radius:	2.5 mm
radial dynamic load capacity:	216 kN
series:	73
d	100 mm

## PRECISION BEARING CORP.

D	215 mm
B	47 mm
d <sub>1</sub>	144.5 mm
d <sub>2</sub>	120.46 mm
D <sub>1</sub>	173.75 mm
a	90 mm
r <sub>1,2</sub> min.	3 mm
r <sub>3,4</sub> min.	1.1 mm
d <sub>a</sub> min.	114 mm
D <sub>a</sub> max.	201 mm
D <sub>b</sub> max.	208 mm
r <sub>a</sub> max.	2.5 mm
r <sub>b</sub> max.	1 mm
Basic dynamic load rating C	216 kN
Basic static load rating C <sub>0</sub>	208 kN
Fatigue load limit P <sub>u</sub>	6.95 kN
Reference speed	3800 r/min
Limiting speed	5000 r/min
Calculation factor A	0.63
Calculation factor k <sub>r</sub>	0.1
Calculation factor e	1.14
Calculation factor X	0.35
Calculation factor Y <sub>0</sub>	0.26
Calculation factor Y <sub>2</sub>	0.57
Calculation factor X	0.57
Calculation factor Y <sub>0</sub>	0.52
Calculation factor Y <sub>1</sub>	0.55
Calculation factor Y <sub>2</sub>	0.93
Mass bearing	7.5 kg