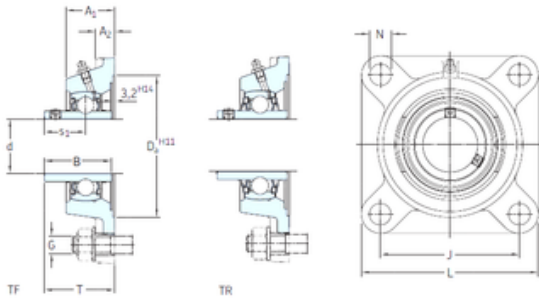


## skf fy 50 tf bearing

Bearing No. fy 50 tf



fy 50 tf Bearing 2D drawings and 3D CAD models

Bore Diameter	50 mm
d	50 mm
Da	125,4 mm
s1	32,6 mm
A1	43 mm
B	51,6 mm
G	16 mm
J	111 mm
L	143 mm
N	18 mm
T	60,6 mm
A2	15 mm
Weight	2,5 Kg
Basic dynamic load rating (C)	35,1 kN
Basic static load rating (C0)	23,2 kN
Fatigue load limit (Pu)	0,98
Category	Flange Block Bearings
Inventory	1.0
Manufacturer Name	SKF
Minimum Buy Quantity	N/A
Weight / Kilogram	2.352
EAN	7316577032287
Product Group	M06110
Number of Mounting Holes	4
Mounting Method	Set Screw
Housing Style	4 Bolt Square Flange Block



## PRECISION BEARING CORP.

Rolling Element	Ball Bearing
Housing Material	Cast Iron
Expansion / Non-expansion	Non-expansion
Mounting Bolts	16 Millimeter
Relubricatable	Yes
Insert Part Number	YAR 210-2F
Seals	M Seal
Housing Configuration	1 Piece Solid
Pilot Configuration	No Pilot
Inch - Metric	Metric
Long Description	4 Bolt Square Flange Block; 50MM Bore; 157MM Bolt Circle; 111MM Bolt Spacing; 1 Piece Solid; Set Screw Mount; Cast Iron; Ball Bearing; 51.6MM Length Thru Bore; Relubricatable; M Seal Seals
Other Features	Single Row   Standard Duty   Wide Inner Race   Open End   Has Flinger   Y Bearing
Category	Flange Block
UNSPSC	31171501
Harmonized Tariff Code	8483.20.40.40
Noun	Bearing
Keyword String	Flanged
Manufacturer URL	<a href="http://www.skf.com">http://www.skf.com</a>
Manufacturer Item Number	FY 50 TF
Weight / LBS	5.51
Bore	1.969 Inch   50 Millimeter
Bolt Spacing	4.37 Inch   111 Millimeter
Cartridge Pilot Depth	0 Inch   0 Millimeter
Cartridge Pilot Diameter	0 Inch   0 Millimeter
Nominal Bolt Circle	6.2 Inch   157 Millimeter



## PRECISION BEARING CORP.

Diameter Round	
Length Thru Bore	2.031 Inch   51.6 Millimeter
bore diameter:	50 mm
radial static load capacity:	23.2 kN
bolt center-to-center length:	111 mm
seal type:	Contact with Flinger
overall length/diameter:	143 mm
length through bore:	60.6 mm
bore type:	Round
operating temperature range:	Maximum of +110 ° F
duty type:	Standard Duty
finish/coating:	Uncoated
mounting type:	Four-Bolt Flange
maximum rpm:	4000 RPM
housing material:	Cast Iron
lubrication type:	Lubrication Fitting
locking device:	Set Screw
series:	FY
expansion type:	Non-Expansion Bearing (Fixed)
replacement bearing:	YAR 210-2F
radial dynamic load capacity:	35.1 kN
manufacturer upc number:	7316577032287
Housing material	Cast iron
D <sub>a</sub>	125.4 mm
D <sub>b1</sub>	107 mm
D <sub>b2</sub>	118 mm
A	43 mm
A <sub>1</sub>	15 mm
A <sub>3</sub>	3.2 mm
A <sub>5</sub>	29.5 mm

## PRECISION BEARING CORP.

$s_1$	32.6 mm
$R_G$	1/4-28 UNF
$R_1$	28.5 mm
$D_N$	6.5 mm
$SW_N$	7 mm
$G_N$	1/4-28 SAE-LT
$J_6$	129 mm
$J_7$	35.5 mm
$N_4$	4 mm
Basic dynamic load rating C	35.1 kN
Basic static load rating $C_0$	23.2 kN
Fatigue load limit $P_u$	0.98 kN
Limiting speed	4000 r/min
Mass bearing unit	2.2 kg
Thread grub screw $G_2$	M10x1
Hexagonal key size for grub screw N	5 mm
Recommended tightening torque for grub screw	16.5 N · m
Recommended diameter for attachment bolts, mm G	16 mm
Recommended diameter for attachment bolts, inch G	0.625 in